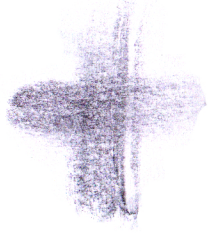
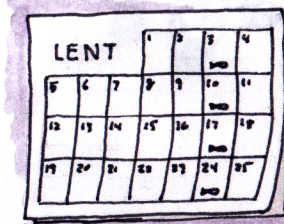


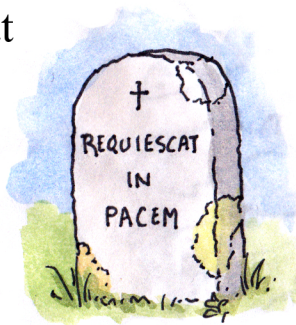
Ash Wednesday

This Wednesday is the first day of Lent, Ash Wednesday. Lent is a special time when we prepare ourselves for Good Friday and Easter Sunday.



If you go to Mass on Ash Wednesday, the priest will make a little cross on your forehead with ashes. The ashes remind us that people were made from the dust of the ground and that some day we will die and go back into the ground.

It is good for us to remember that we will die one day. It helps us realize that God put us here and that we need Him all the time. If we remember how much we need God then we will think of Him more and love Him more.

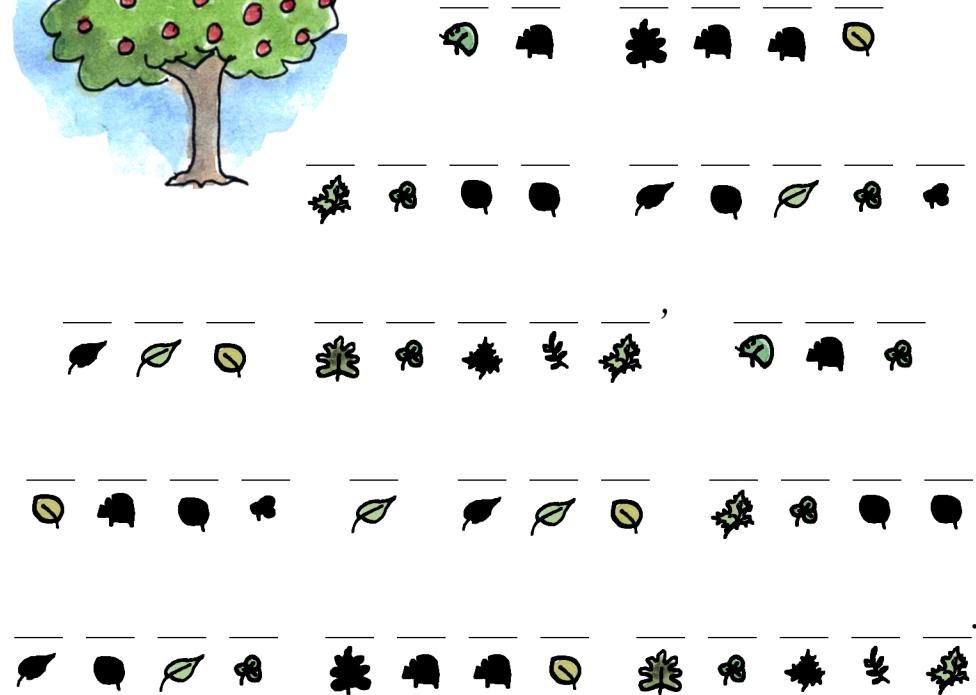
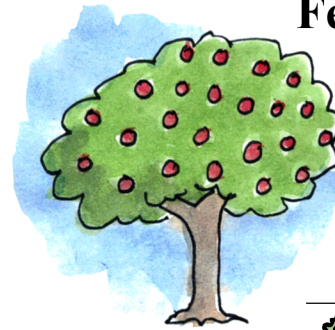


What is something you can do this Lent to remind yourself every day that you need God?

Answer to Front Page: No good tree bears bad fruit, nor does a bad tree bear good fruit.
 Answers to Psalm 92 Unscramble: thanks, name, love, night, palm, grow, house, God, fruit, green, rock

The Kids' Bulletin

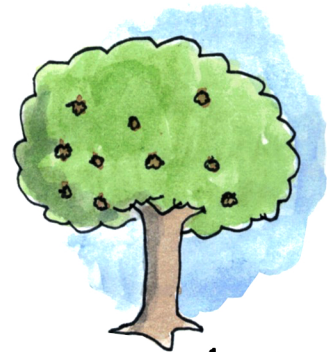
Eighth Sunday in Ordinary Time
 February 27th, 2022



In today's Gospel reading Jesus told a parable about trees.

What did He say?

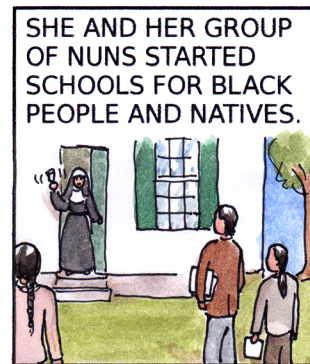
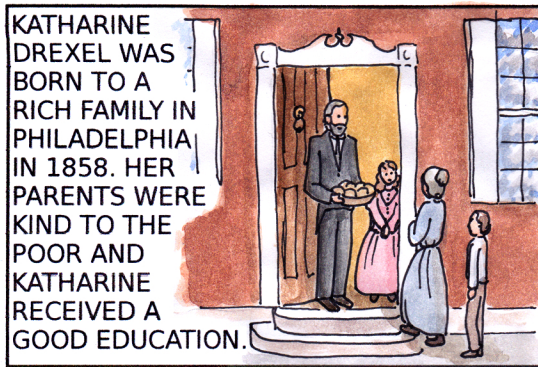
Use the code to find out!



A B D E F G I N O R S T U

Saint Katharine Drexel

March 3



ST. KATHARINE GAVE UP A HUGE FORTUNE AND COMFORTABLE LIFE TO HELP THE LESS FORTUNATE IN HER COUNTRY. WOULD YOU DO THAT IF YOU HAD MILLIONS OF DOLLARS? OUR LORD SAYS IT IS HARD FOR THE RICH TO ENTER HEAVEN, BUT SAINT KATHARINE SHOWS THAT THEY CAN CHOOSE TO BE HOLY TOO.

Psalm 92 Unscramble

Unscramble the missing words to complete today's Psalm!

It is good to give _____ (KNSHTA)
to the Lord,
to sing praises to thy _____ (MNAE),
O Most High;
to declare thy steadfast _____ (OVLE)
in the morning,
and thy faithfulness
by _____. (HGNTI)
The righteous flourish
like the _____ (LMAP) tree,
and _____ (ORGW)
like a cedar in Lebanon.
They are planted
in the _____ (UOESH) of the Lord,
they flourish in the courts
of our _____ (DGO).
They still bring forth _____ (UFIRT)
in old age,
they are ever full of sap
and _____, (ERGNE)
to show that the Lord is upright,
he is my _____, (KCRO)
and there is no
unrighteousness in him.

